

Declaration of conformity

n° 11335 / 2014

According to the results of the following tests:

EN 16139 test report n. 185835- 1/2014
EN 16139 test report n. 185835- 2/2014
EN 1728 test report n. 185835- 3/2014
EN 1728 test report n. 185835- 4/2014
EN 1728 test report n. 185835- 5/2014
EN 1728 test report n. 185835- 6/2014
EN 1728 test report n. 185835- 7/2014
EN 1728 test report n. 185835- 8/2014
EN 1728 test report n. 185835- 9/2014
EN 1728 test report n. 185835-10/2014
EN 1022 test report n. 185835-11/2014




we hereby testify that

SHELL chair

of company
CERANTOLA S.P.A. - VIA GIORGIONE 2-ZONA IND.LE - 31037 RAMON DI LORIA (TV)

complies with the strenght, durability and safety requirements
of 1st level of EN 16139:2013

*This document is validated by digital signature and time stamping in accordance
with the Italian laws and the European Directives which regulate the electronic
signature systems.*


Dott. Andrea Giavon

November 27th, 2014

Sample name is declared by the company who asked for the test. This report relates to the samples submitted for the test and no others. Additions, deletions or alterations are not permitted.

Date received: 03/11/14

Date of issue: 27/11/14

Report consists of 11 test reports.

Defects before testing: None

Sample name: SHELL chair

CERANTOLA S.P.A.
VIA GIORGIONE 2-ZONA IND.LE
31037 RAMON DI LORIA (TV)
ITALIA

SAMPLE N° 185835

Overall dimensions: 540 x 460 x 770 (h) mm

List performed tests:

1. Safety requirements EN 16139:2013+AC:2013
2. Information for use EN 16139:2013+AC:2013
3. Seat and back static load test EN 1728:2012+AC:2013
4. Vertical load on back rest EN 1728:2012+AC:2013
5. Seat and back fatigue test EN 1728:2012+AC:2013
6. Seat front edge durability test EN 1728:2012+AC:2013
7. Leg forward static load test EN 1728:2012+AC:2013
8. Leg sideways static load test EN 1728:2012+AC:2013
9. Seat impact test EN 1728:2012+AC:2013
10. Back impact test EN 1728:2012+AC:2013
11. Stability - EN 1022:2005



This document is validated by digital signature and time stamping in accordance with the Italian laws and the European Directives which regulate the electronic signature systems.

Managing Director
Dr. Andrea Giavon

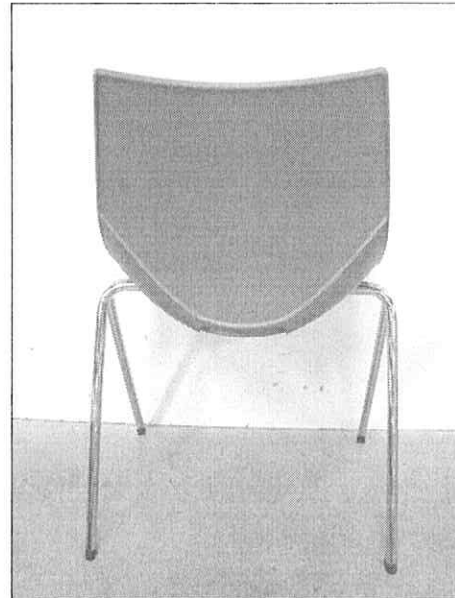
The sample name and, when relevant, its description, are given by the orderer, and CATAS does not assume responsibility on this matter. This test report relates to the sample submitted for the test and no others. Additions, deletions or alterations are not permitted. This test report must always be reproduced in its entirety. Unless otherwise stated, sampling has been carried out by the orderer.

SAMPLE N° 185835

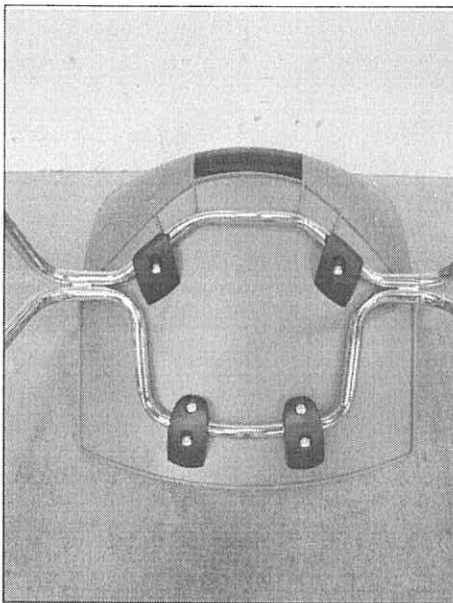
Date of issue: 27/11/14
Sample weight: Not determined
Sample name: SHELL chair



Side view



Rear view



Bottom view

The sample name and, when relevant, its description, are given by the orderer, and CATAS does not assume responsibility on this matter. This test report relates to the sample submitted for the test and no others. Additions, deletions or alterations are not permitted. This test report must always be reproduced in its entirety. Unless otherwise stated, sampling has been carried out by the orderer.

TEST REPORT

185835 / 1

Date received: 03/11/14
Date of test: 11/11/14
Date of issue: 27/11/14



Sample name: SHELL chair

CERANTOLA S.P.A.
VIA GIORGIONE 2-ZONA IND.LE
31037 RAMON DI LORIA (TV)
ITALIA

Safety requirements EN 16139:2013+AC:2013

Safety requirements clause 4

Statement checked	Remarks
Corner and edges in contact with the users: • Absence of sharp edges and corners	Yes
Edges on the handles: • Absence of sharp edges and corners in the direction of the force	Handles not present
Other edges: • Absence of corners	Yes
Accessible hollow components: • The ends of hollow components are closed or capped	Yes
Movable and adjustable parts: • It shall not be possible for any movable and adjustable part of the chair to come operate unintentionally.	Movable and adjustable parts not present
Connections between parts of the structure: • It shall not be possible for any load bearing part of the seating to come loose unintentionally	No
Parts which are lubricated: • All the parts which are lubricated shall be designed to protect users	Lubricated parts not present
Shear and squeeze points between movable parts $\geq 7 \text{ mm} \leq 18 \text{ mm}$: • Shear and squeeze points under influence of powered mechanism • Shear and squeeze points during normal use and during normal movements and actions	Mechanism not present No
Conformity to clauses 4.1 and 4.2 of standard EN 16139:2013:	YES

This document is validated by digital signature and time stamping in accordance with the Italian laws and the European Directives which regulate the electronic signature systems.

Managing Director
Dr. Andrea Giavon

The sample name and, when relevant, its description, are given by the orderer, and CATAS does not assume responsibility on this matter. This test report relates to the sample submitted for the test and no others. Additions, deletions or alterations are not permitted. This test report must always be reproduced in its entirety. Unless otherwise stated, sampling has been carried out by the orderer.

TEST REPORT
185835 / 2

Date received: 03/11/14
Date of test: 27/11/14
Date of issue: 27/11/14
Sample name: SHELL chair



CERANTOLA S.P.A.
VIA GIORGIONE 2-ZONA IND.LE
31037 RAMON DI LORIA (TV)
ITALIA

Information for use EN 16139:2013+AC:2013

Information for use clause 7

Statement checked	Remarks
Information for use in the language of the country in which the chair will be delivered to the end user	Italian language
Information regarding the intended use (Annex B of EN 16139:2013)	Present
Instruction for operating the adjusting mechanisms, where applicable	Not applicable
Assembly instructions, where applicable	Not applicable
Instruction for the care and the maintenance of the chair	Present
Information on the choice of castors in relation to the floor surface if the chair is fitted	Castors not present
Advice that only trained personnel may replace or repair seat height adjustment components with energy accumulators if the chair is fitted	Seat height adjustment not present

Conformity to clause 7 of standard EN 16139:2013:	YES
---	------------

This document is validated by digital signature and time stamping in accordance with the Italian laws and the European Directives which regulate the electronic signature systems.

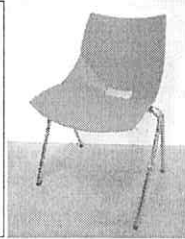
Managing Director
Dr. Andrea Giavon

The sample name and, when relevant, its description, are given by the orderer, and CATAS does not assume responsibility on this matter. This test report relates to the sample submitted for the test and no others. Additions, deletions or alterations are not permitted. This test report must always be reproduced in its entirety. Unless otherwise stated, sampling has been carried out by the orderer.

TEST REPORT

185835 / 3

Date received: 03/11/14
Date of test: 12/11/14
Date of issue: 27/11/14



Sample name: SHELL chair

CERANTOLA S.P.A.
VIA GIORGIONE 2-ZONA IND.LE
31037 RAMON DI LORIA (TV)
ITALIA

Seat and back static load test EN 1728:2012+AC:2013

Seat and back static load test, clause 6.4

Test results:

Seat load N	Back force N	Number of cycles	Remarks
1.600	560	10	No defects

Seat front edge static load, clause 6.5

Seat load N	Number of cycles	Remarks
1.300	10	No defects

Note:

The test has been carried out according to table 1 of EN 16139:2013, level L1 - general.

This document is validated by digital signature and time stamping in accordance with the Italian laws and the European Directives which regulate the electronic signature systems.

*Managing Director
Dr. Andrea Giavon*

The sample name and, when relevant, its description, are given by the orderer, and CATAS does not assume responsibility on this matter. This test report relates to the sample submitted for the test and no others. Additions, deletions or alterations are not permitted. This test report must always be reproduced in its entirety. Unless otherwise stated, sampling has been carried out by the orderer.

TEST REPORT

185835 / 4

Date received: 03/11/14
Date of test: 12/11/14
Date of issue: 27/11/14



Sample name: SHELL chair

CERANTOLA S.P.A.
VIA GIORGIONE 2-ZONA IND.LE
31037 RAMON DI LORIA (TV)
ITALIA

Vertical load on back rest EN 1728:2012+AC:2013

Vertical static load on back rest clause 6.6

Test results:

Seat load N	Downwards force N	Number of applications	Remarks
1.300	600	10	No defects

Note:

The test has been carried out according to table 1 of EN 16139:2013, level L1 - general.

This document is validated by digital signature and time stamping in accordance with the Italian laws and the European Directives which regulate the electronic signature systems.

*Managing Director
Dr. Andrea Gievon*

The sample name and, when relevant, its description, are given by the orderer, and CATAS does not assume responsibility on this matter. This test report relates to the sample submitted for the test and no others. Additions, deletions or alterations are not permitted. This test report must always be reproduced in its entirety. Unless otherwise stated, sampling has been carried out by the orderer.

TEST REPORT
185835 / 5

Date received: 03/11/14
 Date of test: 12/11/14
 Date of issue: 27/11/14



Sample name: SHELL chair

CERANTOLA S.P.A.
 VIA GIORGIONE 2-ZONA IND.LE
 31037 RAMON DI LORIA (TV)
 ITALIA

Seat and back fatigue test EN 1728:2012+AC:2013

Seat and back fatigue test, clause 6.17

Test results:

Seat force N	Back force N	Number of cycles	Remarks
1.000	300	100.000	No defects

Note:

The test has been carried out according to table 1 of EN 16139:2013, level L1 - general.

This document is validated by digital signature and time stamping in accordance with the Italian laws and the European Directives which regulate the electronic signature systems.

Managing Director
 Dr. Andrea Giavon

The sample name and, when relevant, its description, are given by the orderer, and CATAS does not assume responsibility on this matter. This test report relates to the sample submitted for the test and no others. Additions, deletions or alterations are not permitted. This test report must always be reproduced in its entirety. Unless otherwise stated, sampling has been carried out by the orderer.

TEST REPORT
185835 / 6



Date received: 03/11/14
 Date of test: 20/11/14
 Date of issue: 27/11/14
 Sample name: SHELL chair

CERANTOLA S.P.A.
 VIA GIORGIONE 2-ZONA IND.LE
 31037 RAMON DI LORIA (TV)
 ITALIA

Seat front edge durability test EN 1728:2012+AC:2013

Seat front edge durability test clause 6.18

Test results:

Points of application	Seat force N	Number of cycles	Remarks
100 mm back from the front edge	800	50.000	No defects

Note:

The test has been carried out according to table 1 of EN 16139:2013, level L1 - general.

This document is validated by digital signature and time stamping in accordance with the Italian laws and the European Directives which regulate the electronic signature systems.

Managing Director
 Dr. Andrea Giavon

The sample name and, when relevant, its description, are given by the orderer, and CATAS does not assume responsibility on this matter. This test report relates to the sample submitted for the test and no others. Additions, deletions or alterations are not permitted. This test report must always be reproduced in its entirety. Unless otherwise stated, sampling has been carried out by the orderer.

TEST REPORT
185835 / 7

Date received: 03/11/14
Date of test: 25/11/14
Date of issue: 27/11/14



Sample name: SHELL chair

CERANTOLA S.P.A.
VIA GIORGIONE 2-ZONA IND.LE
31037 RAMON DI LORIA (TV)
ITALIA

Leg forward static load test EN 1728:2012+AC:2013

Leg forward static load test clause 6.15

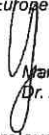
Test results:

Forward horizontal force N	Balancing seat force N	Number of cycles	Remarks
500	1.000	10	No defects

Note:

The test has been carried out according to table 1 of EN 16139:2013, level L1 - general.

This document is validated by digital signature and time stamping in accordance with the Italian laws and the European Directives which regulate the electronic signature systems.


Managing Director
Dr. Andrea Giavon

The sample name and, when relevant, its description, are given by the orderer, and CATAS does not assume responsibility on this matter. This test report relates to the sample submitted for the test and no others. Additions, deletions or alterations are not permitted. This test report must always be reproduced in its entirety. Unless otherwise stated, sampling has been carried out by the orderer.

TEST REPORT

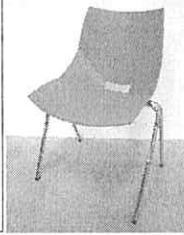
185835 / 8

Date received: 03/11/14

Date of test: 25/11/14

Date of issue: 27/11/14

Sample name: SHELL chair



CERANTOLA S.P.A.
VIA GIORGIONE 2-ZONA IND.LE
31037 RAMON DI LORIA (TV)
ITALIA

Leg sideways static load test EN 1728:2012+AC:2013

Leg sideways static load test clause 6.16

Test results:

Sideways horizontal force N	Balancing seat force N	Number of cycles	Remarks
400	1.000	10	No defects

Note:

The test has been carried out according to table 1 of EN 16139:2013, level L1 - general.

This document is validated by digital signature and time stamping in accordance with the Italian laws and the European Directives which regulate the electronic signature systems.

Managing Director
D. Andrea Giayon

The sample name and, when relevant, its description, are given by the orderer, and CATAS does not assume responsibility on this matter. This test report relates to the sample submitted for the test and no others. Additions, deletions or alterations are not permitted. This test report must always be reproduced in its entirety. Unless otherwise stated, sampling has been carried out by the orderer.

TEST REPORT
185835 / 9

Date received: 03/11/14
Date of test: 26/11/14
Date of issue: 27/11/14



Sample name: SHELL chair

CERANTOLA S.P.A.
VIA GIORGIONE 2-ZONA IND.LE
31037 RAMON DI LORIA (TV)
ITALIA

Seat impact test EN 1728:2012+AC:2013

Seat impact test clause 6.24

Test results:

Mass of impactor kg	Height of drop mm	Number of drops	Remarks
25	240	10	No defects

Note:

The test has been carried out according to table 1 of EN 16139:2013, level L1 - general.

This document is validated by digital signature and time stamping in accordance with the Italian laws and the European Directives which regulate the electronic signature systems.


Managing Director
Dr. Andrea Giavon

The sample name and, when relevant, its description, are given by the orderer, and CATAS does not assume responsibility on this matter. This test report relates to the sample submitted for the test and no others. Additions, deletions or alterations are not permitted. This test report must always be reproduced in its entirety. Unless otherwise stated, sampling has been carried out by the orderer.

TEST REPORT
185835 / 10

Date received: 03/11/14
Date of test: 26/11/14
Date of issue: 27/11/14



Sample name: SHELL chair

CERANTOLA S.P.A.
VIA GIORGIONE 2-ZONA IND.LE
31037 RAMON DI LORIA (TV)
ITALIA

Back impact test EN 1728:2012+AC:2013

Back impact test clause 6.25

Test results:

Angle	Mass of impactor kg	Number of cycles	Remarks
38	6,5	10	No defects

Note:

The test has been carried out according to table 1 of EN 16139:2013, level L1 - general.

This document is validated by digital signature and time stamping in accordance with the Italian laws and the European Directives which regulate the electronic signature systems.

Managing Director
Dr. Andrea Giavon

The sample name and, when relevant, its description, are given by the orderer, and CATAS does not assume responsibility on this matter. This test report relates to the sample submitted for the test and no others. Additions, deletions or alterations are not permitted. This test report must always be reproduced in its entirety. Unless otherwise stated, sampling has been carried out by the orderer.

TEST REPORT

185835 / 11

Date received: 03/11/14
Date of test: 26/11/14
Date of issue: 27/11/14

Sample name: SHELL chair



CERANTOLA S.P.A.
VIA GIORGIONE 2-ZONA IND.LE
31037 RAMON DI LORIA (TV)
ITALIA

Stability - EN 1022:2005

Type of chair: fixed geometry

Minimum horizontal force for rearwards overturning of fixed back chair: 163 N

Forwards overturning

Horizontal force : 20 N does not overturn

Rearwards overturning

Fixed back chair
Horizontal force : 163 N does not overturn

Tilting chair in the rearmost position

Loading discs on the seat : /

Sideways overturning for chairs with arms

Horizontal force : /

Sideways overturning for chairs without arms

Horizontal force : 20 N does not overturn

Forwards overturning for chairs with footrest

Horizontal force : /

Test passed

This document is validated by digital signature and time stamping in accordance with the Italian laws and the European Directives which regulate the electronic signature systems.

Managing Director
Dr. Andrea Craxion

The sample name and, when relevant, its description, are given by the orderer, and CATAS does not assume responsibility on this matter. This test report relates to the sample submitted for the test and no others. Additions, deletions or alterations are not permitted. This test report must always be reproduced in its entirety. Unless otherwise stated, sampling has been carried out by the orderer.



31037 RAMON DI LORIA (TV) Italy - Via Giorgione, 2 (z.i.)
Tel. 0423.755013 r.a. - Fax 0423.755152 - R.E.A. TV 190527
Reg. Imp. n. 27484-TV - C. Id. IVA CEE n. IT 02143740260
Cap. Soc. € 101.400 i.v. - E-mail: info@cerantola.com

ISTRUZIONI D'USO SEDIA SHELL

Al fine di garantire la stabilità e la durata nel tempo dell'articolo, si consiglia di:

- Prima dell'uso assicurarsi che l'articolo sia montato correttamente.
- Verificare che il prodotto venga utilizzato con le quattro gambe appoggiate al pavimento e che lo stesso non consenta scivolamento.
- Non fare oscillare il prodotto durante l'utilizzo.
- Non sedersi sulla spalliera sui braccioli o sulla tavoletta (se presenti)
- Per spostare l'articolo, evitare il trascinamento.
- Evitare il contatto con fonti di calore.
- Il prodotto non è adatto ad uso esterno se non richiesto specificatamente.

CONSIGLI DI MANUTENZIONE

- I liquidi rovesciati devono essere assorbiti immediatamente con un panno pulito ed asciutto.
- Per le parti in plastica utilizzare sapone neutro.
- **EVITARE TASSATIVAMENTE** l'usi di solventi o di detersivi chimici, poiché potrebbero alterare le caratteristiche estetiche e fisiche dell'articolo.

USO PREVISTO

- Seduta per casa / ufficio
- Seduta per sale attesa
- Seduta per sale conferenza
- Seduta per comunità
- Seduta contract

Rimanendo a disposizione per qualsiasi altro ragguaglio si rendesse necessario ed in attesa di ricevere l'attestazione al più presto possibile, l'occasione c'è gradita per porgere i nostri migliori saluti.

CERANTOLA SPA

Date of receipt:	27/05/21	CERANTOLA S.P.A.
Date of issue:	01/06/21	VIA GIORGIONE 2-ZONA IND.LE
Report consists of 2 test reports.		31037 RAMON DI LORIA (TV)
Defects before testing: None		ITALIA
Sample name:	SHELL/STRIKE/QUICK ARM WITH WRITING TABLET	

SAMPLE N° 311248

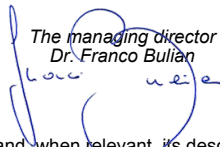
Overall dimensions: 605 x 515 x 800 (h) mm

List of test reports:

1. Vertical static load on auxiliary writing surfaces EN 1728:2012+AC:2013
2. Auxiliary writing surface durability test EN 1728:2012+AC:2013



This document is part of a PDF file digitally signed by Franco Bulian on 01/06/21.

*The managing director
Dr. Franco Bulian*


The sample name and, when relevant, its description, are given by the orderer, and CATAS does not assume responsibility on this matter. This test report relates to the sample submitted for the test and no others. Additions, deletions or alterations are not permitted. This test report must always be reproduced in its entirety. Unless otherwise required by standards and technical specifications or agreed with the customer, any declarations of conformity made by CATAS are based on the comparison between results and reference values, where the confidence intervals of the measures are not taken into account. Unless otherwise stated, sampling is made by the customer; in this case the test results are referred to the sample as received.

SAMPLE N° 311248

Date of issue: 01/06/21
Sample weight: Not determined
Sample name: SHELL/STRIKE/QUICK ARM WITH WRITING TABLET



Side view



Rear view



Bottom view

The sample name and, when relevant, its description, are given by the orderer, and CATAS does not assume responsibility on this matter. This test report relates to the sample submitted for the test and no others. Additions, deletions or alterations are not permitted. This test report must always be reproduced in its entirety. Unless otherwise required by standards and technical specifications or agreed with the customer, any declarations of conformity made by CATAS are based on the comparison between results and reference values, where the confidence intervals of the measures are not taken into account. Unless otherwise stated, sampling is made by the customer; in this case the test results are referred to the sample as received.

TEST REPORT

311248 / 1

Revision: 0
Date of receipt: 27/05/21
Date of test: 31/05/21
Date of issue: 01/06/21



CERANTOLA S.P.A.
VIA GIORGIONE 2-ZONA IND.LE
31037 RAMON DI LORIA (TV)
ITALIA

Sample name: SHELL/STRIKE/QUICK ARM WITH WRITING TABLET

Vertical static load on auxiliary writing surfaces EN 1728:2012+AC:2013

Test performed according to EN 16139:2013+AC:2013

Vertical static load on auxiliary writing surface clause 6.14, EN 1728:2012+AC:2013

Test results:

Downward force N	Number of applications	Remarks
300	10	No defects

Note:

The test results comply with the requirements in clause 5 a), b), c) and d) of EN 16139:2013+AC:2013, level 1.

This test report is part of a PDF file digitally signed by Franco Bulian on 01/06/21.

The managing director
Dr. Franco Bulian
[Handwritten signature]

The sample name and, when relevant, its description, are given by the orderer, and CATAS does not assume responsibility on this matter. This test report relates to the sample submitted for the test and no others. Additions, deletions or alterations are not permitted. This test report must always be reproduced in its entirety. Unless otherwise required by standards and technical specifications or agreed with the customer, any declarations of conformity made by CATAS are based on the comparison between results and reference values, where the confidence intervals of the measures are not taken into account. Unless otherwise stated, sampling is made by the customer; in this case the test results are referred to the sample as received.

TEST REPORT

311248 / 2

Revision: 0
Date of receipt: 27/05/21
Date of test: 31/05/21
Date of issue: 01/06/21



CERANTOLA S.P.A.
VIA GIORGIONE 2-ZONA IND.LE
31037 RAMON DI LORIA (TV)
ITALIA

Sample name: SHELL/STRIKE/QUICK ARM WITH WRITING TABLET

Auxiliary writing surface durability test EN 1728:2012+AC:2013

Test performed according to EN 16139:2013+AC:2013

Auxiliary writing surface durability test clause 6.22, EN 1728:2012+AC:2013

Test results:

Downward force N	Number of cycles	Remarks
150	10.000	No defects

Note:

The test results comply with the requirements in clause 5 a), b), c) and d) of EN 16139:2013+AC:2013, level 1.

This test report is part of a PDF file digitally signed by Franco Bulian on 01/06/21.

The managing director
Dr. Franco Bulian

The sample name and, when relevant, its description, are given by the orderer, and CATAS does not assume responsibility on this matter. This test report relates to the sample submitted for the test and no others. Additions, deletions or alterations are not permitted. This test report must always be reproduced in its entirety. Unless otherwise required by standards and technical specifications or agreed with the customer, any declarations of conformity made by CATAS are based on the comparison between results and reference values, where the confidence intervals of the measures are not taken into account. Unless otherwise stated, sampling is made by the customer; in this case the test results are referred to the sample as received.

Date of receipt:	07/06/21	CERANTOLA S.P.A.
Date of issue:	10/06/21	VIA GIORGIONE 2-ZONA IND.LE
Report consists of 2 test reports.		31037 RAMON DI LORIA (TV)
Defects before testing: None		ITALIA
Sample name:	SHELL/STRIKE/QUICK ARM WITH WRITING TABLET	

SAMPLE N° 311729

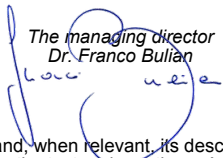
Overall dimensions: 605 x 515 x 800 (h) mm

List of test reports:

1. Vertical static load on auxiliary writing surfaces EN 1728:2012+AC:2013
2. Auxiliary writing surface durability test EN 1728:2012+AC:2013



This document is part of a PDF file digitally signed by Franco Bulian on 10/06/21.

*The managing director
Dr. Franco Bulian*


The sample name and, when relevant, its description, are given by the orderer, and CATAS does not assume responsibility on this matter. This test report relates to the sample submitted for the test and no others. Additions, deletions or alterations are not permitted. This test report must always be reproduced in its entirety. Unless otherwise required by standards and technical specifications or agreed with the customer, any declarations of conformity made by CATAS are based on the comparison between results and reference values, where the confidence intervals of the measures are not taken into account. Unless otherwise stated, sampling is made by the customer; in this case the test results are referred to the sample as received.

SAMPLE N° 311729

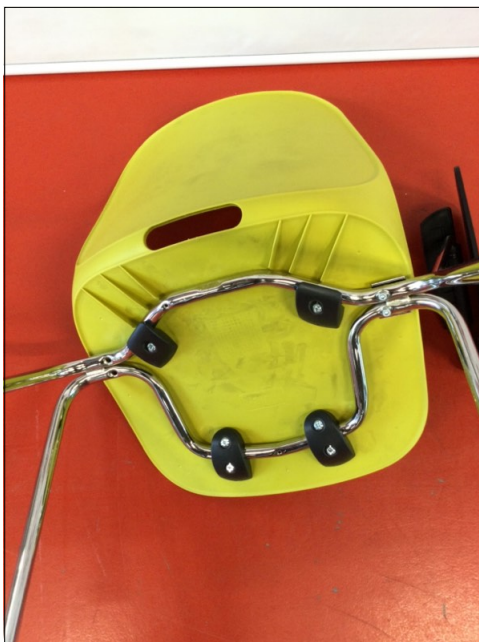
Date of issue: 10/06/21
Sample weight: Not determined
Sample name: SHELL/STRIKE/QUICK ARM WITH WRITING TABLET



Side view



Rear view



Bottom view

The sample name and, when relevant, its description, are given by the orderer, and CATAS does not assume responsibility on this matter. This test report relates to the sample submitted for the test and no others. Additions, deletions or alterations are not permitted. This test report must always be reproduced in its entirety. Unless otherwise required by standards and technical specifications or agreed with the customer, any declarations of conformity made by CATAS are based on the comparison between results and reference values, where the confidence intervals of the measures are not taken into account. Unless otherwise stated, sampling is made by the customer; in this case the test results are referred to the sample as received.

TEST REPORT

311729 / 1

Revision: 0
Date of receipt: 07/06/21
Date of test: 09/06/21
Date of issue: 10/06/21



CERANTOLA S.P.A.
VIA GIORGIONE 2-ZONA IND.LE
31037 RAMON DI LORIA (TV)
ITALIA

Sample name: SHELL/STRIKE/QUICK ARM WITH WRITING TABLET

Vertical static load on auxiliary writing surfaces EN 1728:2012+AC:2013

Test performed according to EN 16139:2013+AC:2013

Vertical static load on auxiliary writing surface clause 6.14, EN 1728:2012+AC:2013

Test results:

Downward force N	Number of applications	Remarks
300	10	No defects

Note:

The test results comply with the requirements in clause 5 a), b), c) and d) of EN 16139:2013+AC:2013, level 2.

This test report is part of a PDF file digitally signed by Franco Bulian on 10/06/21.

*The managing director
Dr. Franco Bulian*

The sample name and, when relevant, its description, are given by the orderer, and CATAS does not assume responsibility on this matter. This test report relates to the sample submitted for the test and no others. Additions, deletions or alterations are not permitted. This test report must always be reproduced in its entirety. Unless otherwise required by standards and technical specifications or agreed with the customer, any declarations of conformity made by CATAS are based on the comparison between results and reference values, where the confidence intervals of the measures are not taken into account. Unless otherwise stated, sampling is made by the customer; in this case the test results are referred to the sample as received.

TEST REPORT

311729 / 2

Revision: 0
Date of receipt: 07/06/21
Date of test: 09/06/21
Date of issue: 10/06/21



CERANTOLA S.P.A.
VIA GIORGIONE 2-ZONA IND.LE
31037 RAMON DI LORIA (TV)
ITALIA

Sample name: SHELL/STRIKE/QUICK ARM WITH WRITING TABLET

Auxiliary writing surface durability test EN 1728:2012+AC:2013

Test performed according to EN 16139:2013+AC:2013

Auxiliary writing surface durability test clause 6.22, EN 1728:2012+AC:2013

Test results:

Downward force N	Number of cycles	Remarks
150	20.000	No defects

Note:

The test results comply with the requirements in clause 5 a), b), c) and d) of EN 16139:2013+AC:2013, level 2.

This test report is part of a PDF file digitally signed by Franco Bulian on 10/06/21.

*The managing director
Dr. Franco Bulian*

The sample name and, when relevant, its description, are given by the orderer, and CATAS does not assume responsibility on this matter. This test report relates to the sample submitted for the test and no others. Additions, deletions or alterations are not permitted. This test report must always be reproduced in its entirety. Unless otherwise required by standards and technical specifications or agreed with the customer, any declarations of conformity made by CATAS are based on the comparison between results and reference values, where the confidence intervals of the measures are not taken into account. Unless otherwise stated, sampling is made by the customer; in this case the test results are referred to the sample as received.

Imposta di Bollo
assolta



49886

26077



Ministero dell' Interno

DIPARTIMENTO DEI VIGILI DEL FUOCO DEL SOCCORSO PUBBLICO E DELLA DIFESA CIVILE
DIREZIONE CENTRALE PER LA PREVENZIONE E LA SICUREZZA TECNICA
CENTRO STUDI ED ESPERIENZE

3153_49886_26077

Visto l'Atto di Omologazione rilasciato in data 17/07/2008 con Codice di Omologazione: TV2689D30D100002, progr. 26077, con ultima validità fino al 17/07/2023, relativo al prodotto con denominazione commerciale: "SEDIA SHELL" con impiego: "MOBILE (SEDIA)";

Vista l'istanza di rinnovo progr. 41955 del 20/06/2018 con validità rinnovata fino al 17/07/2023;

Vista l'istanza di rinnovo progr. 49886, assunta a protocollo DCPREV n. 16385 del 06/11/2023, presentata dalla ditta CERANTOLA S.P.A. sita in Via Giorgione, 2, 31037 - RAMON DI LORIA (TV);

SI RINNOVA

l'Atto di omologazione con Codice: TV2689D30D100002, con validità fino al 17/07/2028, salvo le limitazioni previste dall'art.4, comma 3, del D.M. 10/03/2005 .

Il presente atto è da considerarsi parte integrante dell'atto di omologazione di cui in premessa e ad esso è accluso.

IL DIRETTORE CENTRALE
(Mannino)

Firmato in forma digitale ai sensi di legge

IL DIRIGENTE

(Ing. Massimo Nazzareno BONFATTI)

Firmato in forma digitale ai sensi di legge

IL RESPONSABILE DEL SETTORE OMOLOGAZIONI

(Ing. Marcello SERPIERI)

Firmato in forma digitale ai sensi di legge



SottoF. 3153